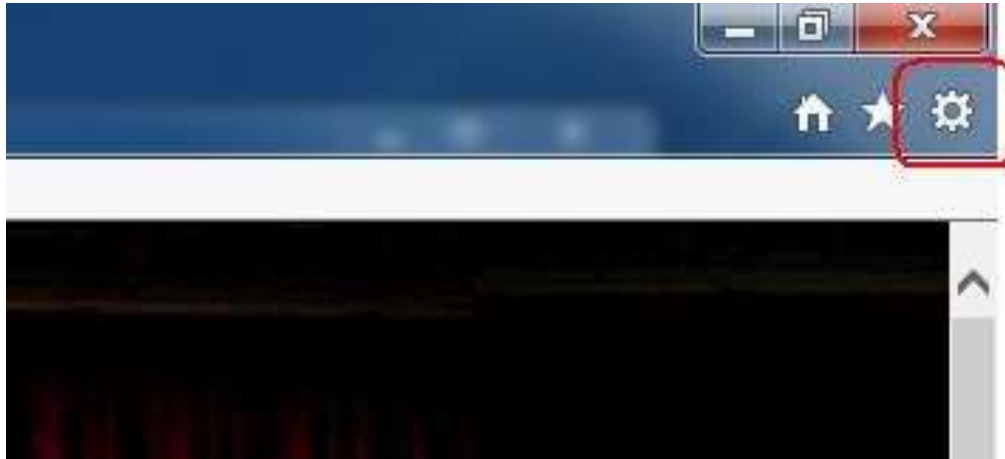
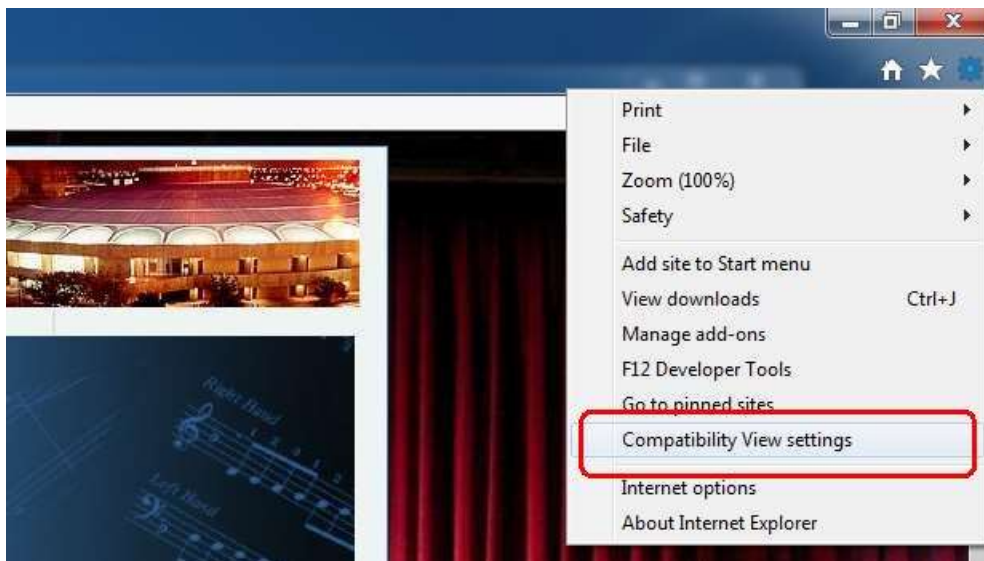


# Internet Explorer 11: Turning on Compatibility View

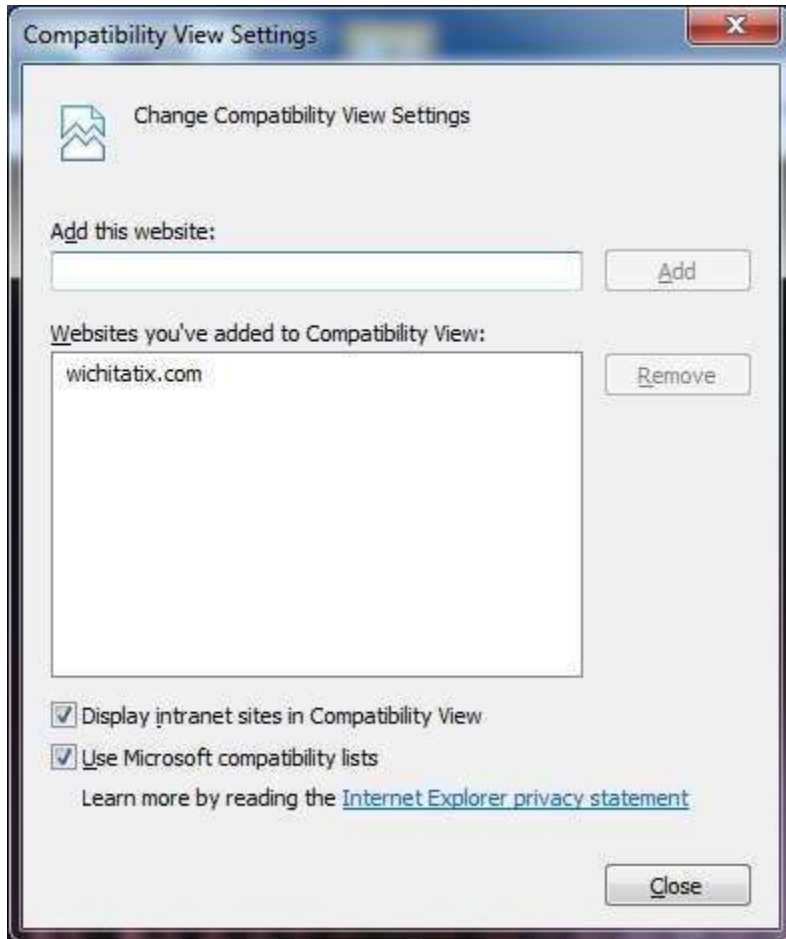
1. Click the **Settings Icon** on the address bar in your web browser (resembles a gear, usually on the right side).




2. Choose **Compatibility View settings**.



3. In the 'Add this website' box, type **WichitaTix.com** if it does not automatically populate. Then click the **Add** button and close the window.



4. Click the  symbol in the address bar of your browser to refresh your browse, or close and reopen Internet Explorer.